

**Cortical auditory evoked potentials recorded in the clinic from objectively-fit paediatric  
MED-EL cochlear implant users [Supporting material]**

Julie Kosaner<sup>a</sup>, Bram Van Dun<sup>b,c</sup>, Ozgur Yigit<sup>d</sup>, Muammer Gultekin<sup>a</sup>, Svetlana Bayguzina<sup>a</sup>

[julie.kosaner@meders.com.tr](mailto:julie.kosaner@meders.com.tr) ; [bram.vandun@nal.gov.au](mailto:bram.vandun@nal.gov.au) ; [dryigit@hotmail.com](mailto:dryigit@hotmail.com) ;  
[muammer.gultekin@meders.com.tr](mailto:muammer.gultekin@meders.com.tr) ; [svetlana.bayguzina@meders.com.tr](mailto:svetlana.bayguzina@meders.com.tr)

<sup>a</sup>Meders speech and Hearing Clinic, Meders İşitme ve Konuşma Merkezi, Söğütlüçeşme  
Caddesi: No 102, Kadıköy- İstanbul 34714, Turkey

<sup>b</sup>National Acoustic Laboratories, Australian Hearing Hub, Level 5, 16 University Avenue,  
Macquarie University NSW 2109, Australia

<sup>c</sup>The HEARing CRC, 550 Swanston St, Carlton NSW 3053, Australia

<sup>d</sup>Istanbul Training and Research Hospital, SBÜ. İstanbul Eğitim ve Araştırma Hastanesi,  
Kasap İlyas Mah., Org. Abdurrahman Nafiz Gürman Cd., 34098 Fatih/İstanbul, Turkey

Address for correspondence:

Bram Van Dun

National Acoustic Laboratories

Australian Hearing Hub

Level 5, 16 University Avenue

Macquarie University NSW 2109 Australia

P +61 2 9412 6967

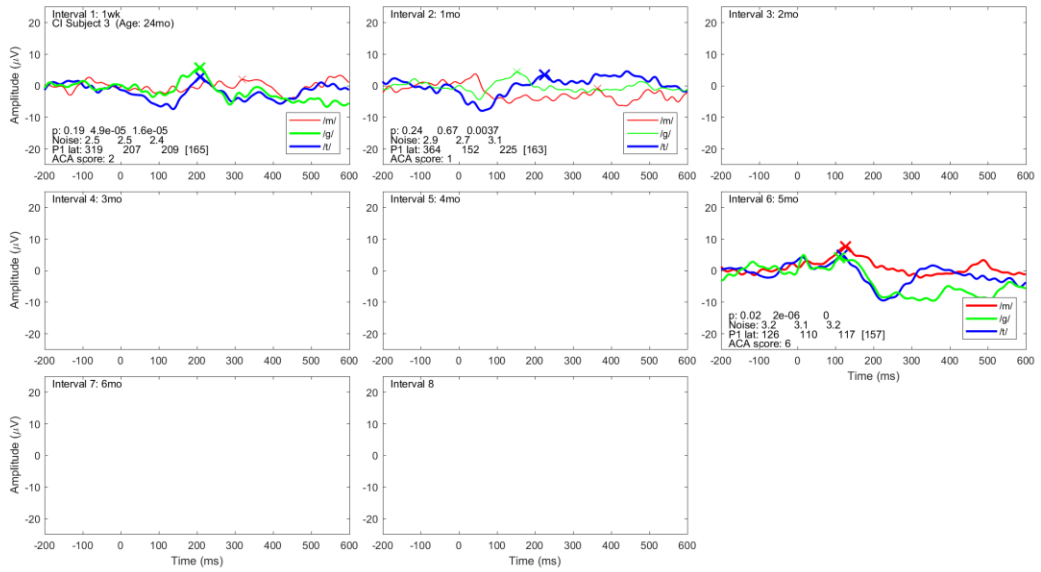
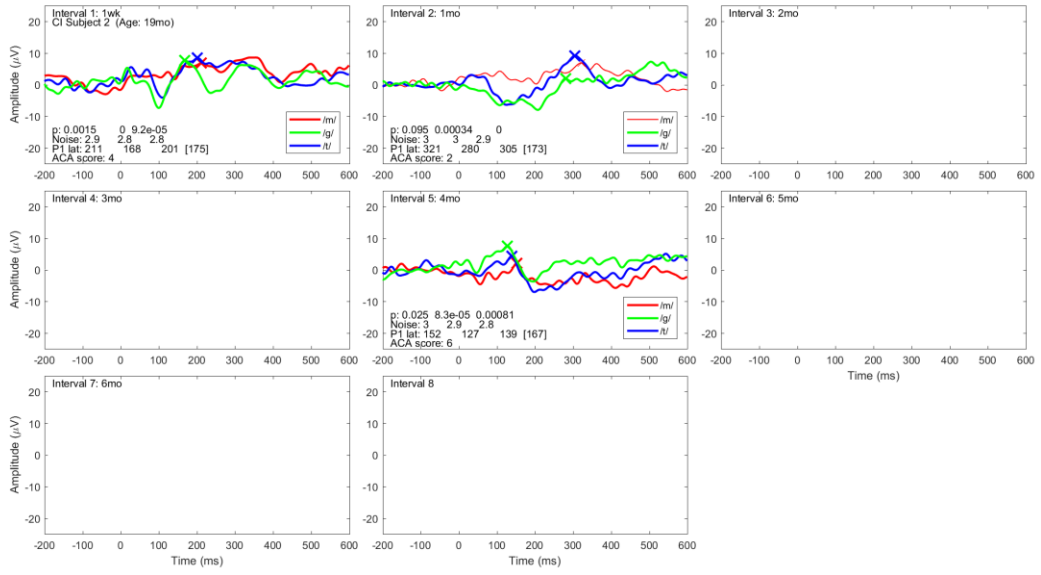
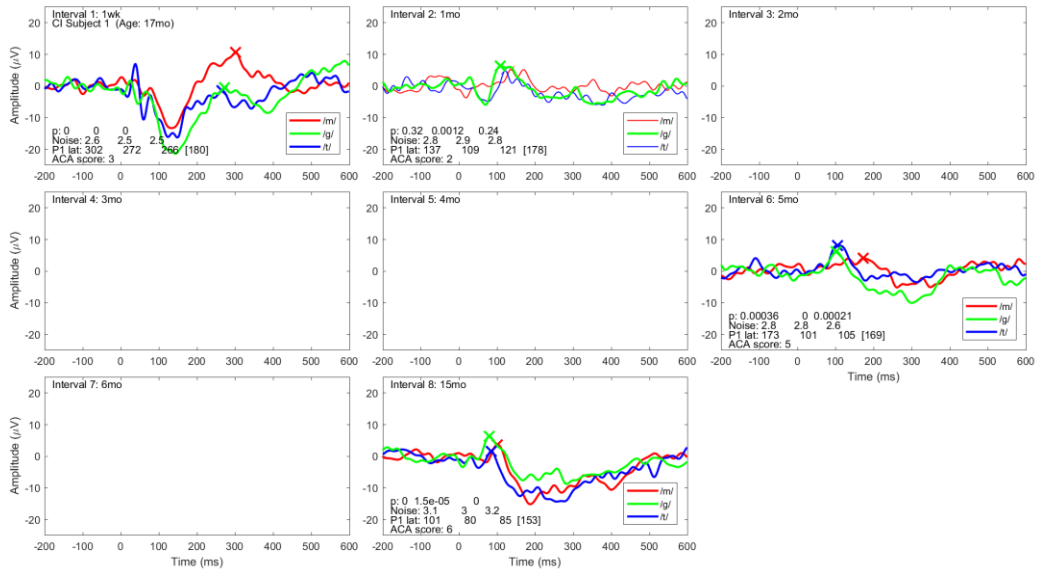
F +61 2 9412 6769

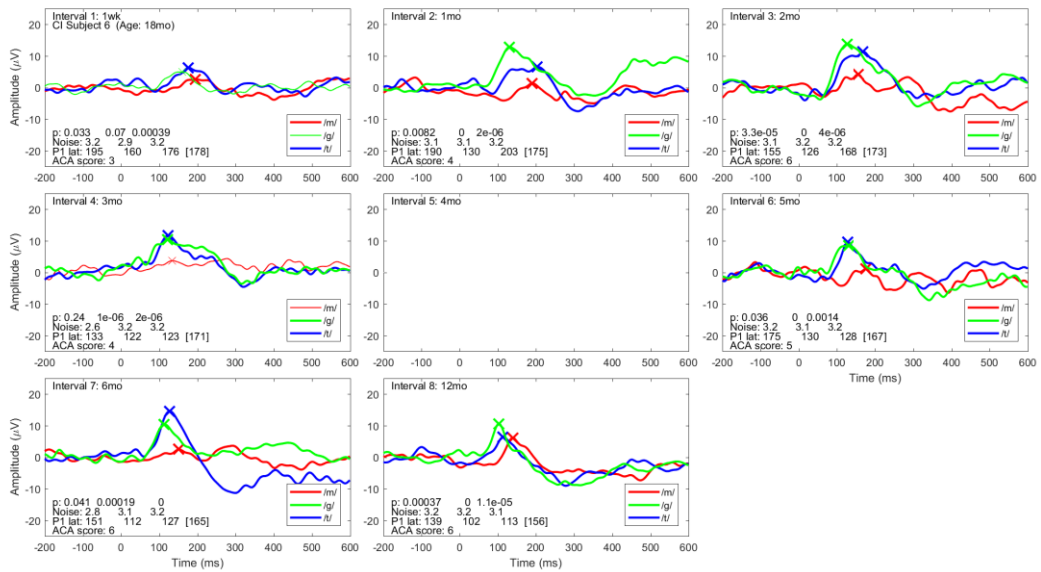
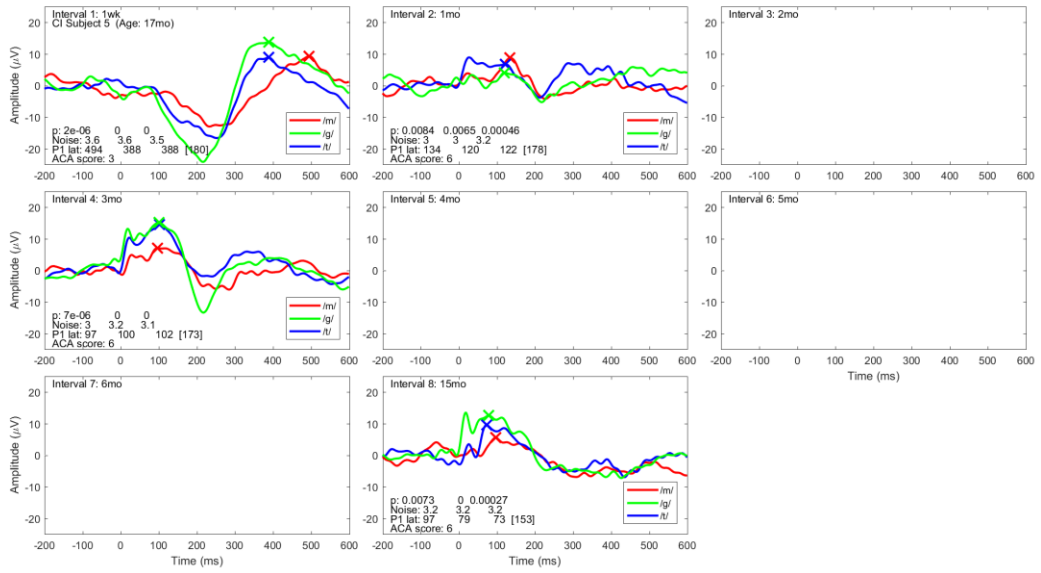
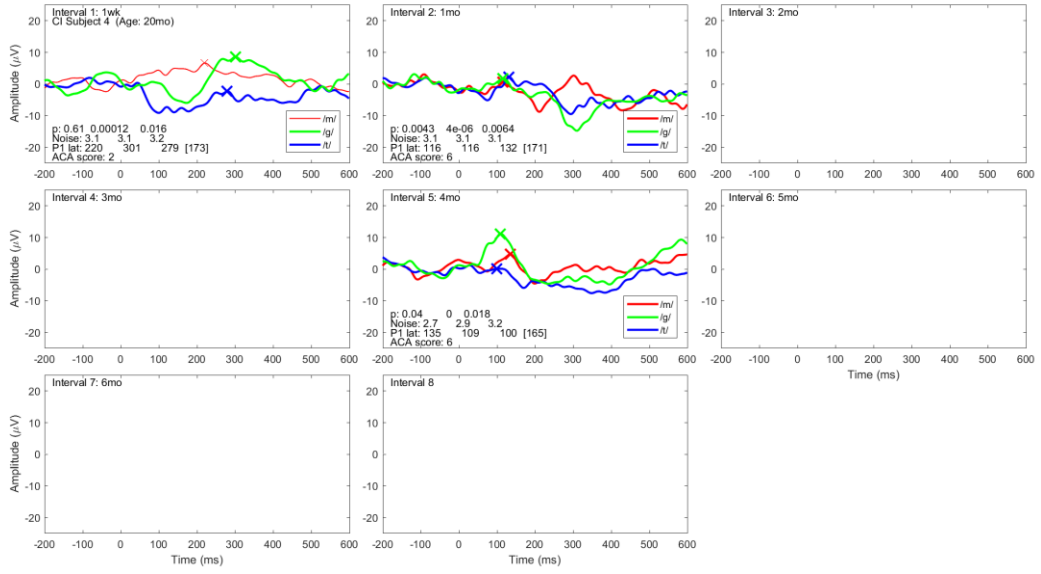
E-mail: [bram.vandun@nal.gov.au](mailto:bram.vandun@nal.gov.au)

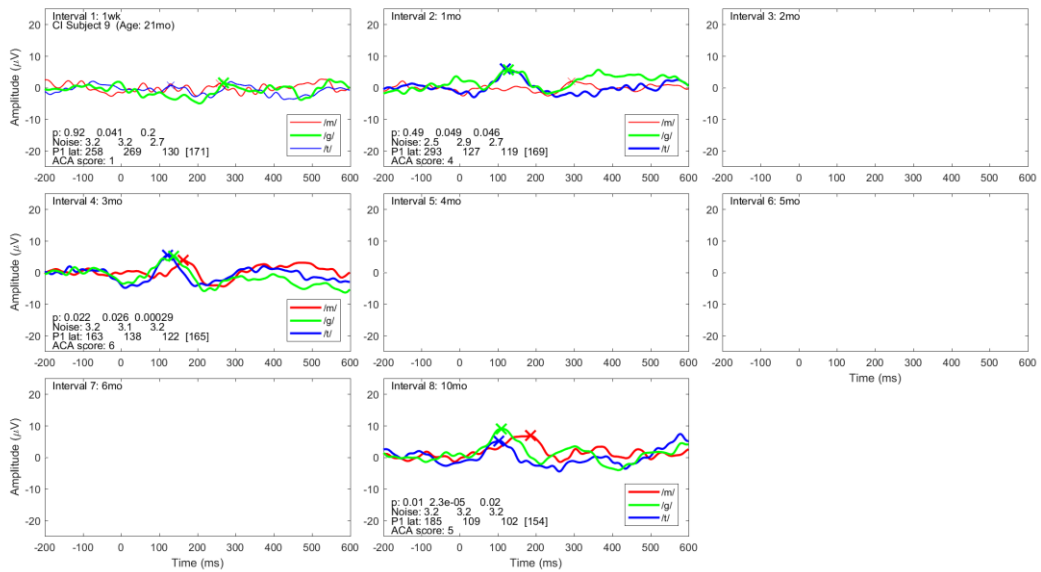
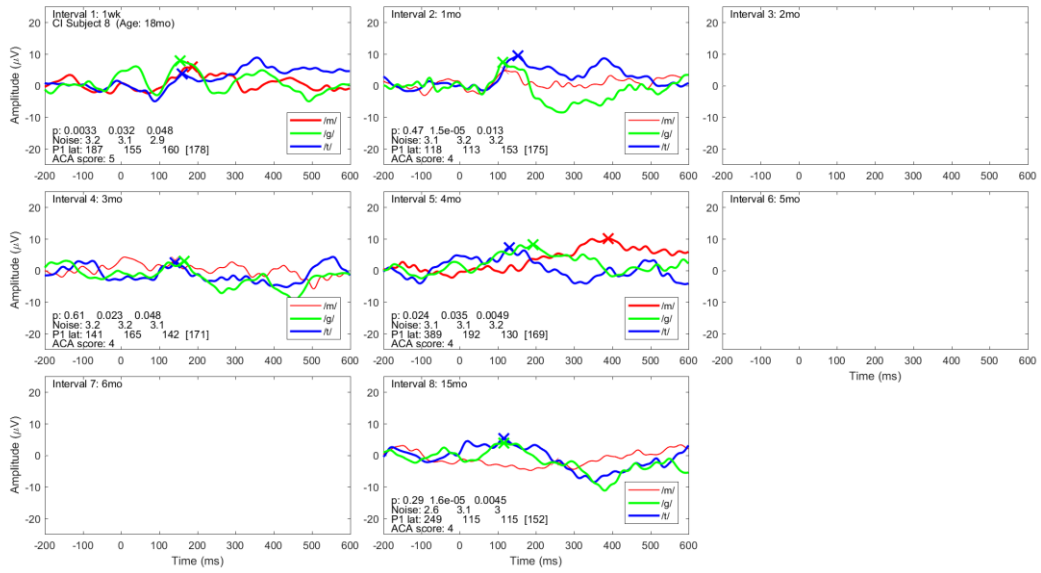
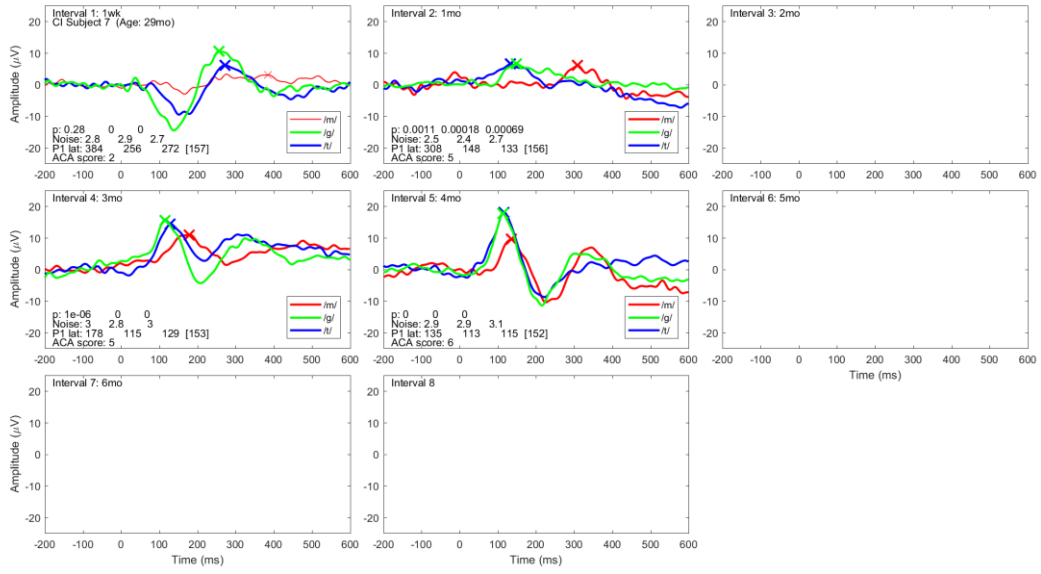
## Additional materials – CI children (subjects 1 to 45)

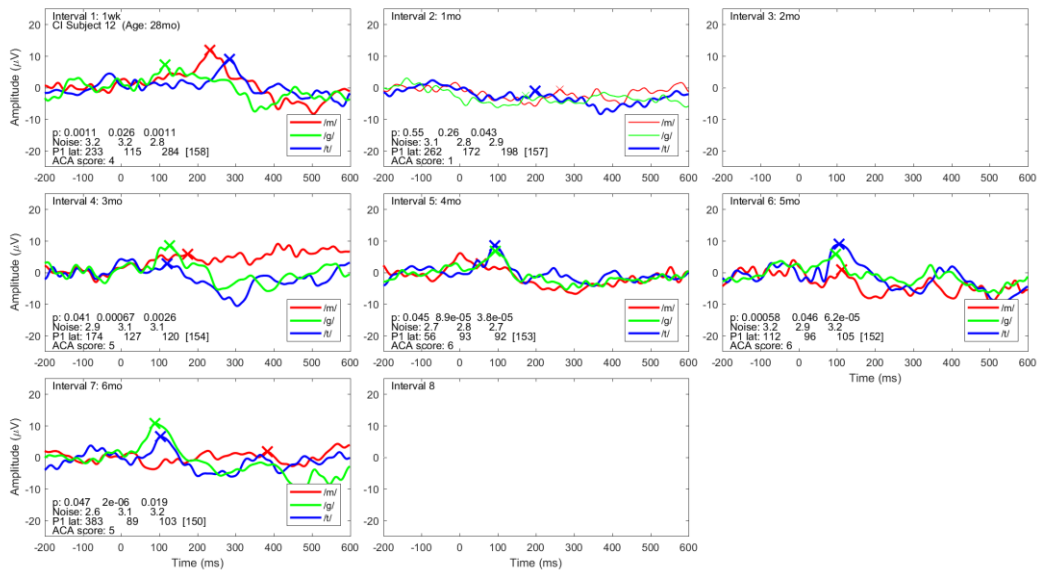
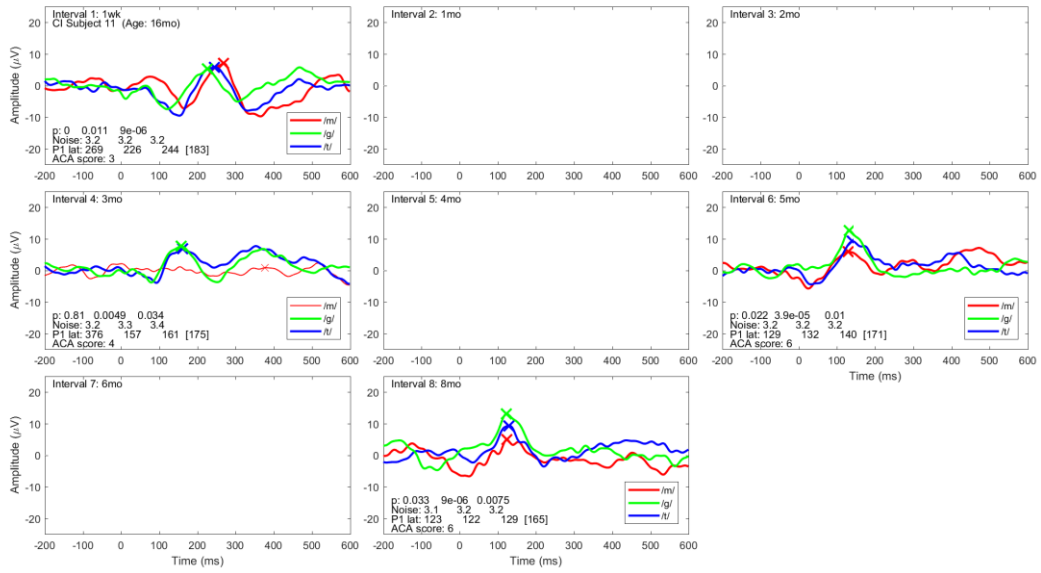
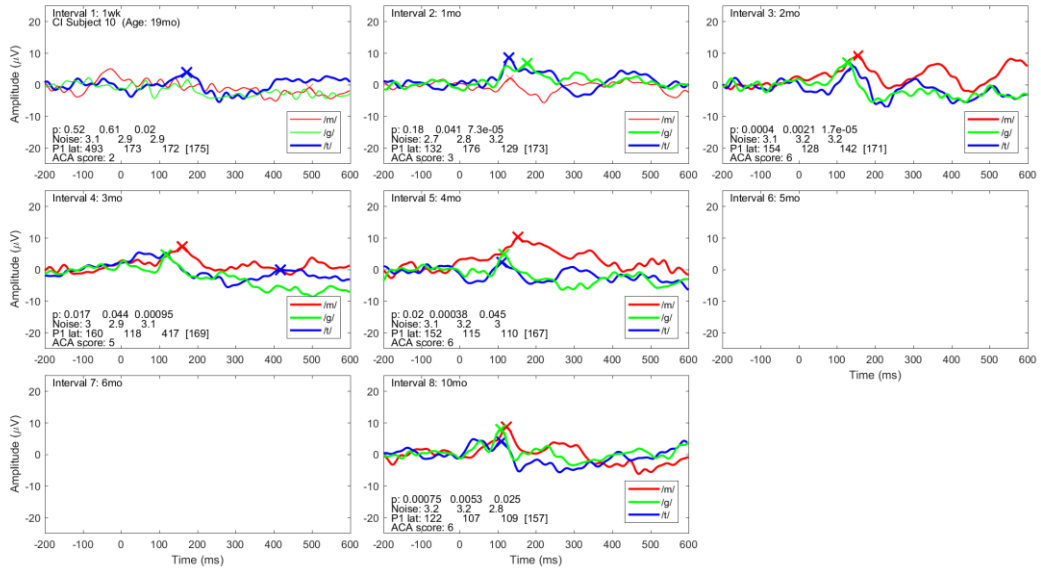
The following information is provided:

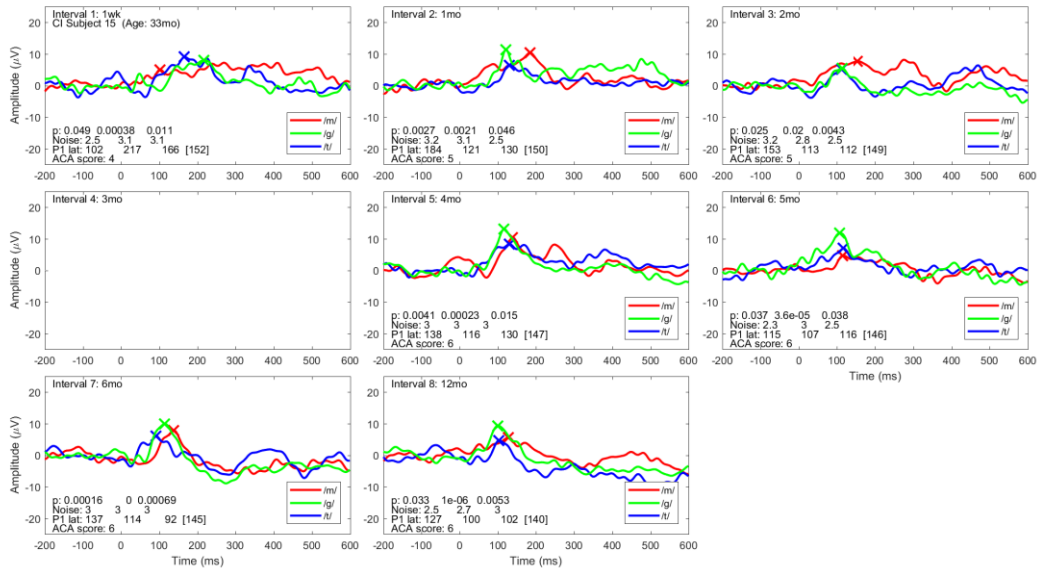
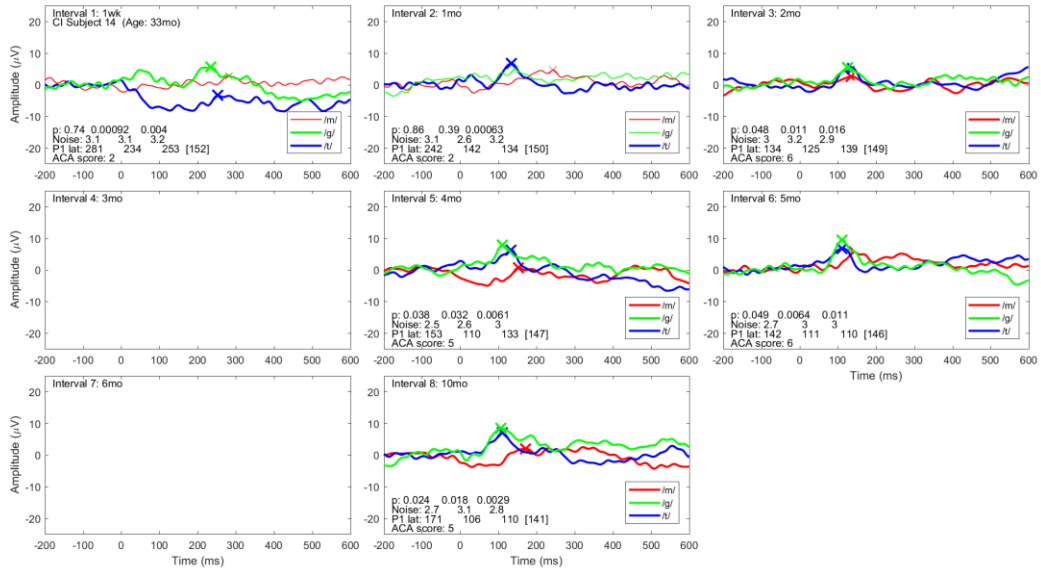
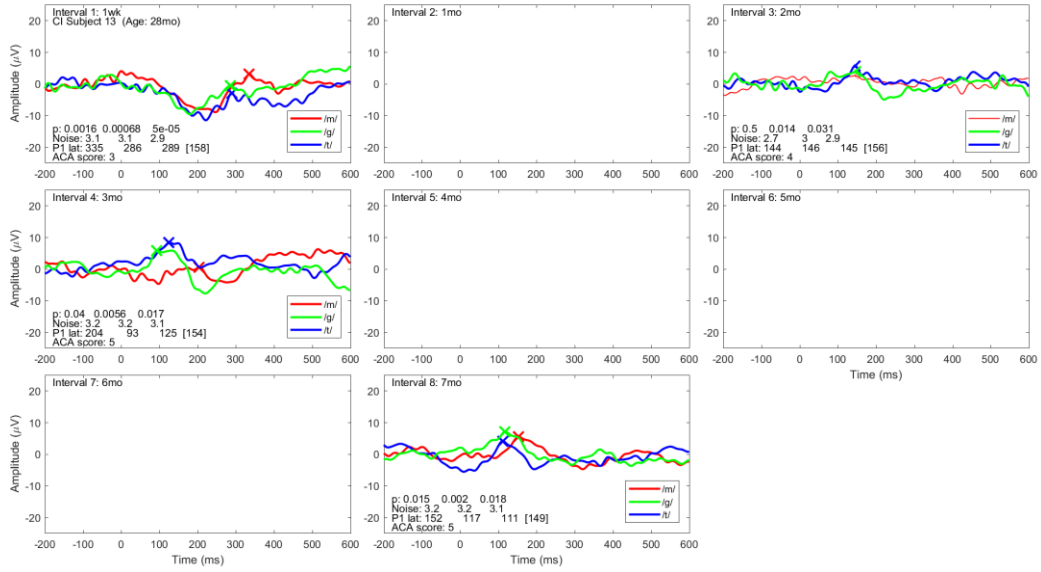
- All waveforms for each subject and test interval (where available) in a 3x3 format. Waveforms that are statistically significant ( $p \leq 0.05$ ) are displayed in bold.
- Subject number and age at switch-on.
- Test interval with corresponding time elapsed since switch-on.
- P-values for the three speech tokens (/m/, /g/ and /t/).
- Residual EEG noise level (in  $\mu\text{V}$ ).
- P1 latency as determined by the automatic algorithms (in ms). The value between square brackets indicates the upper limit of the age-dependent normative latency range.
- Combined ACA score (ranging from 0 to 6).

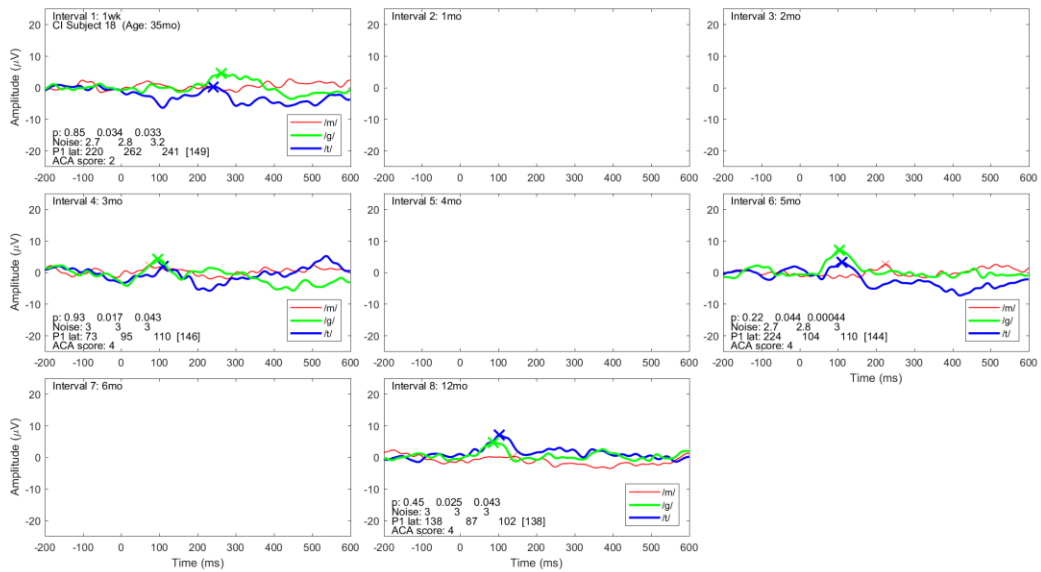
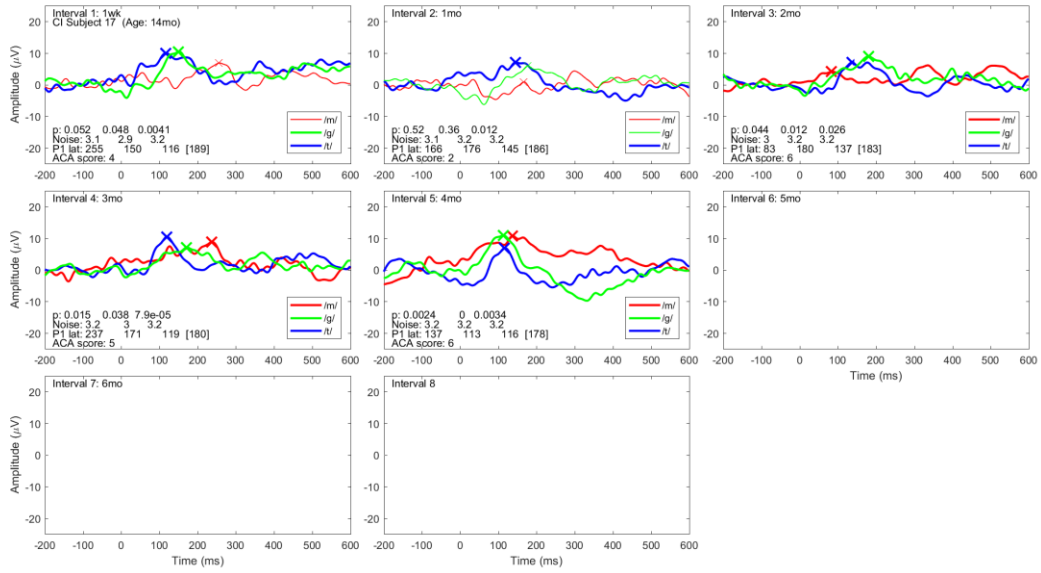
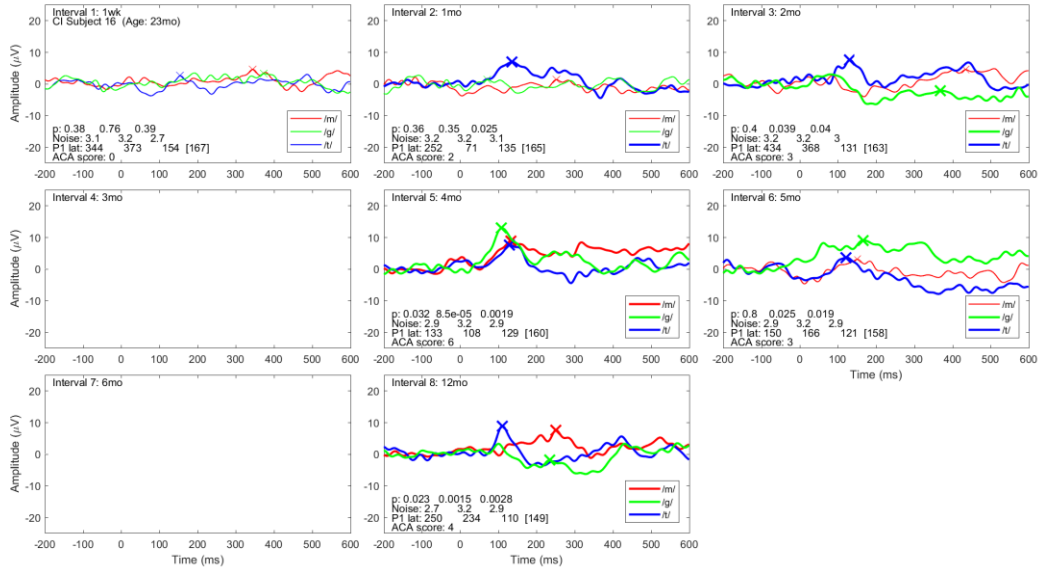




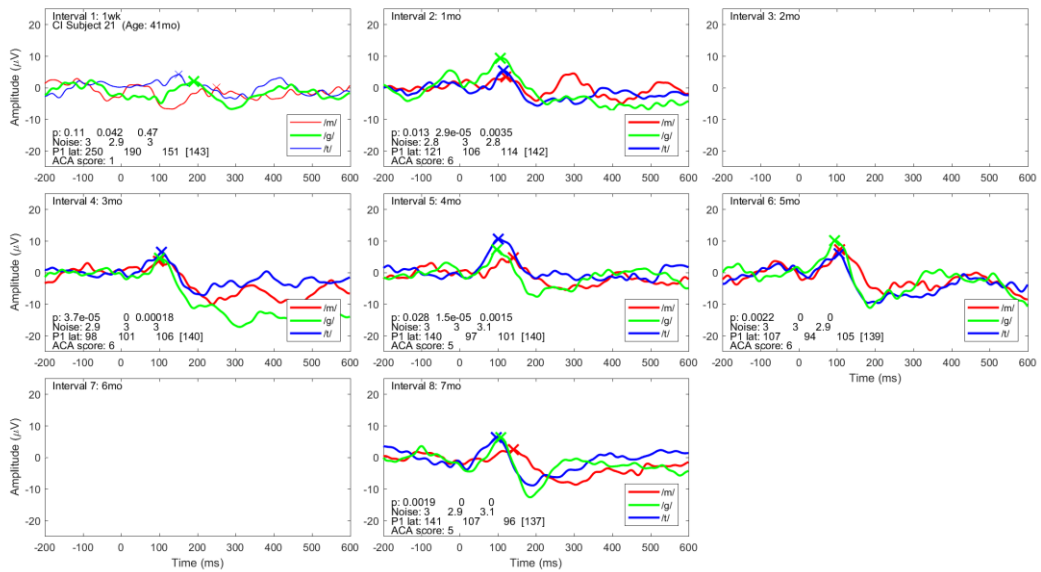
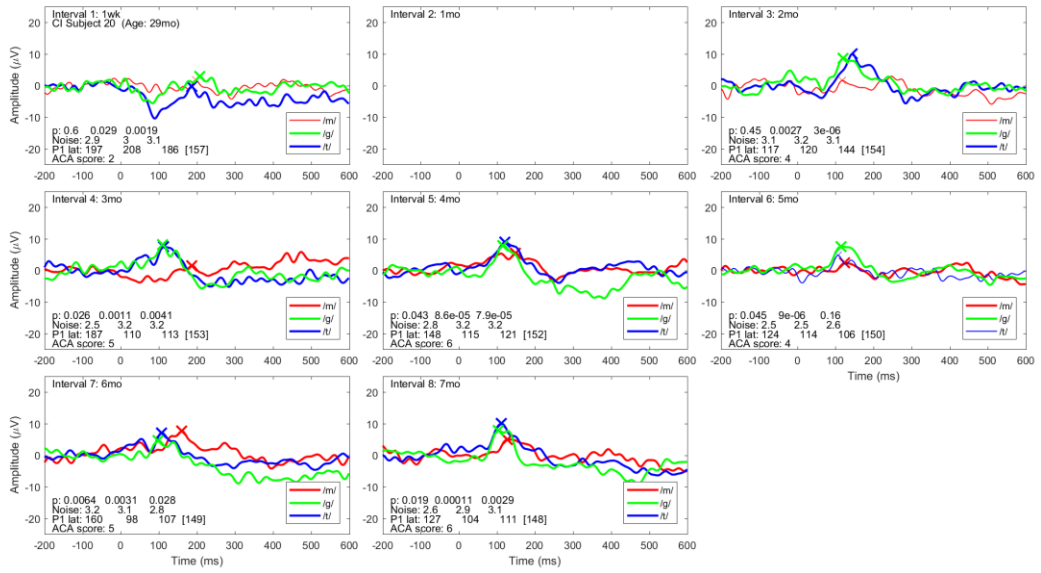
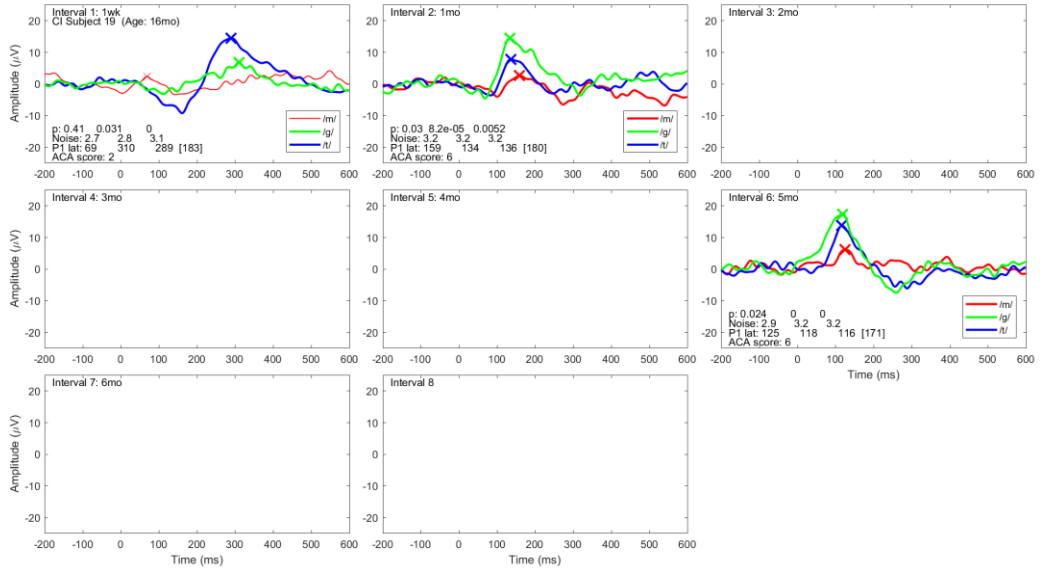


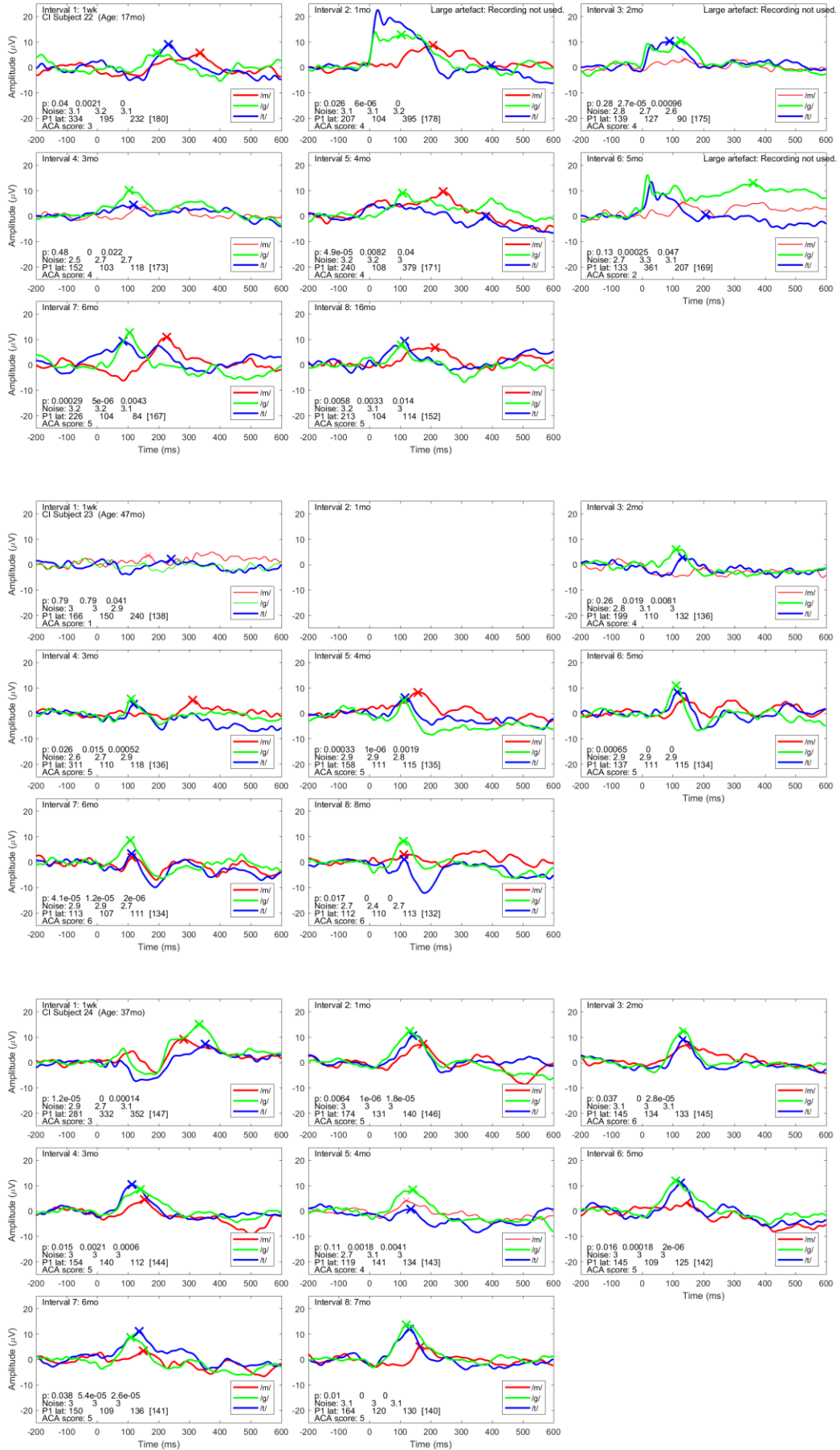


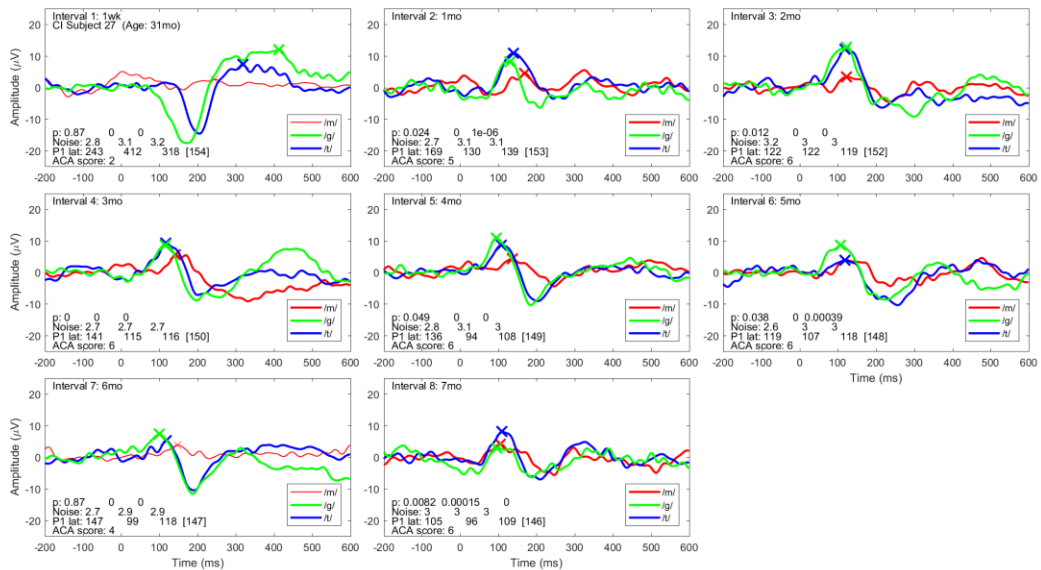
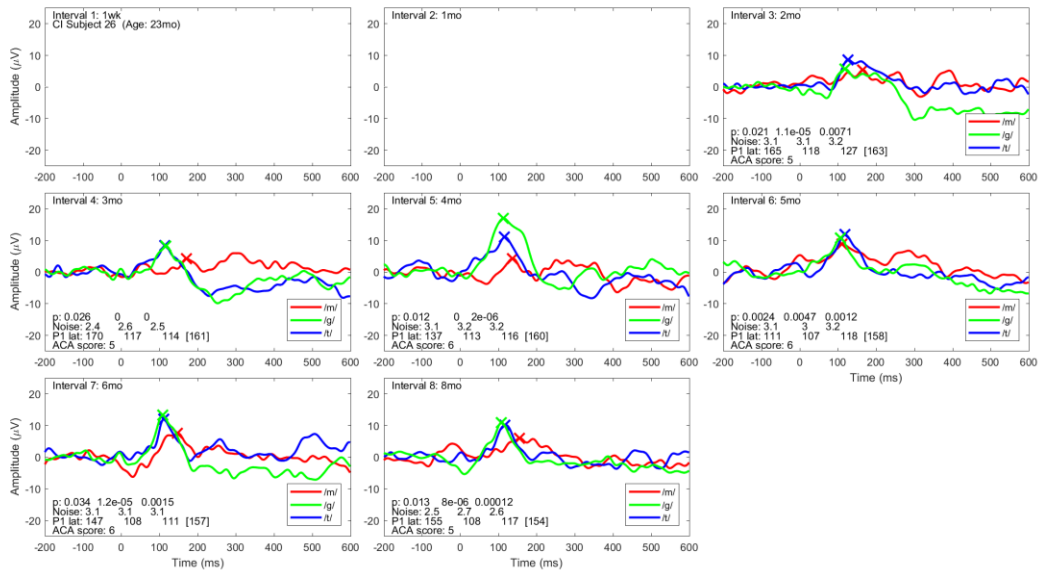
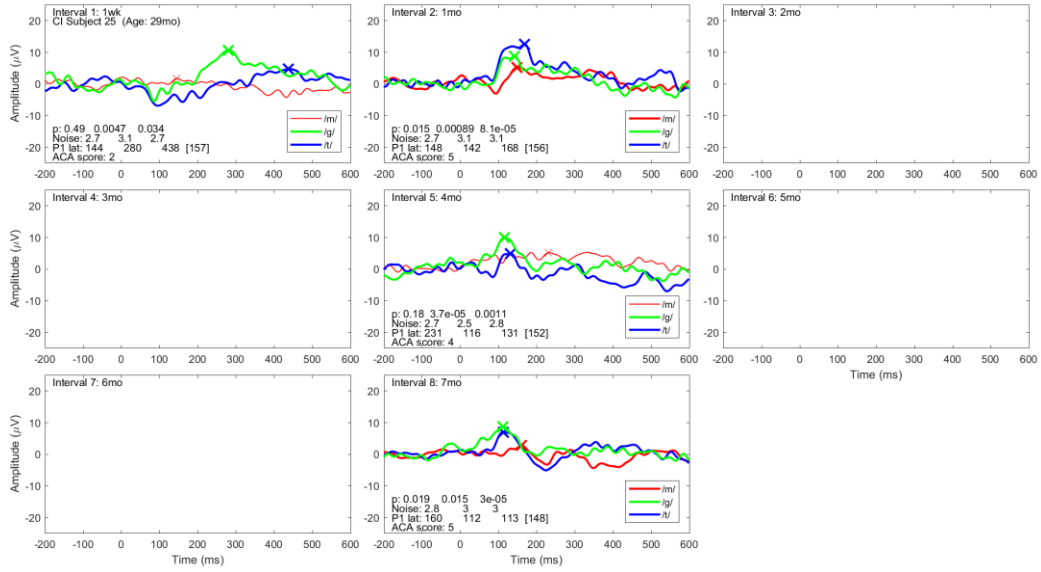


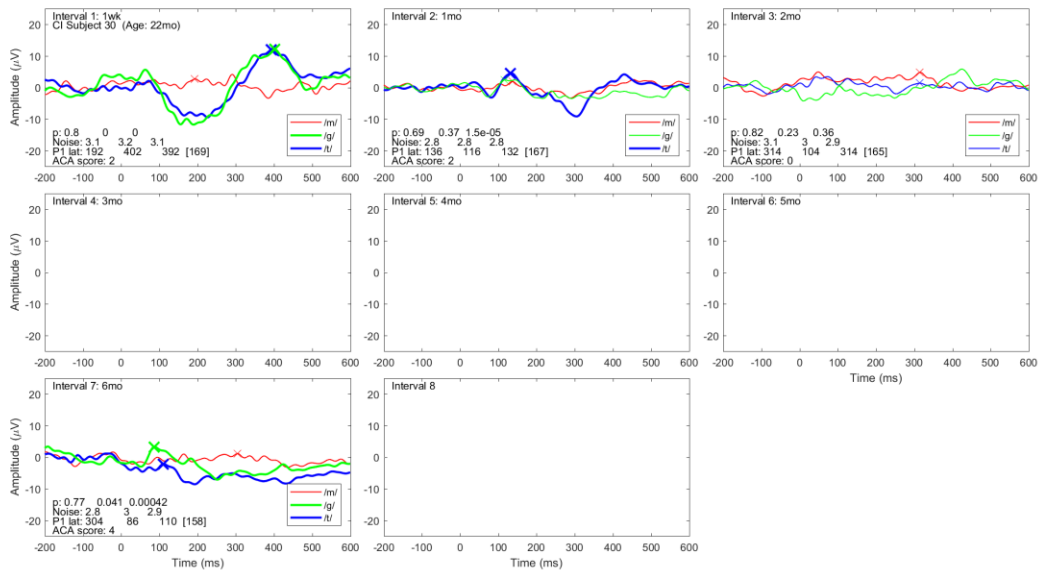
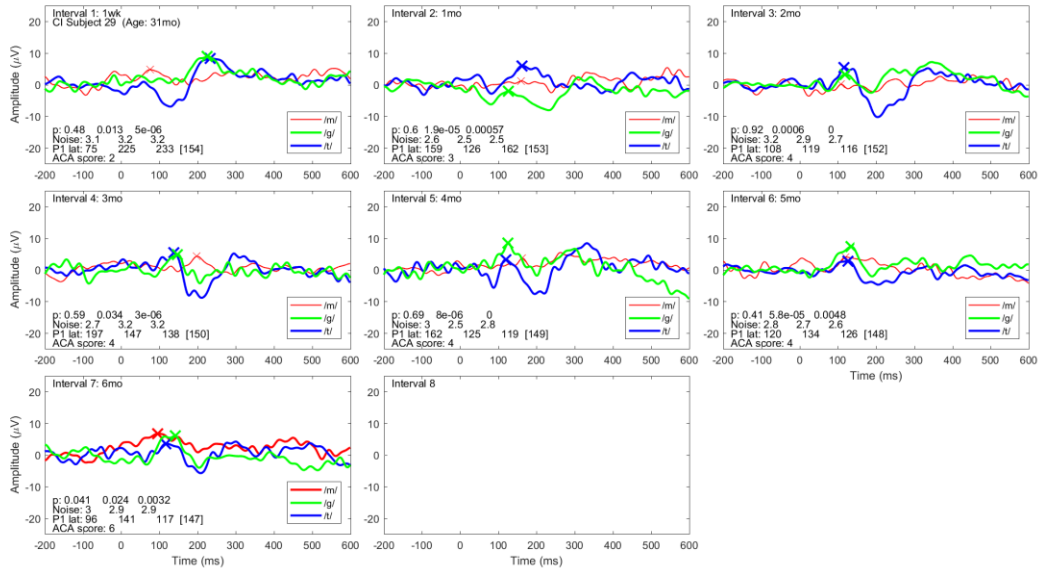
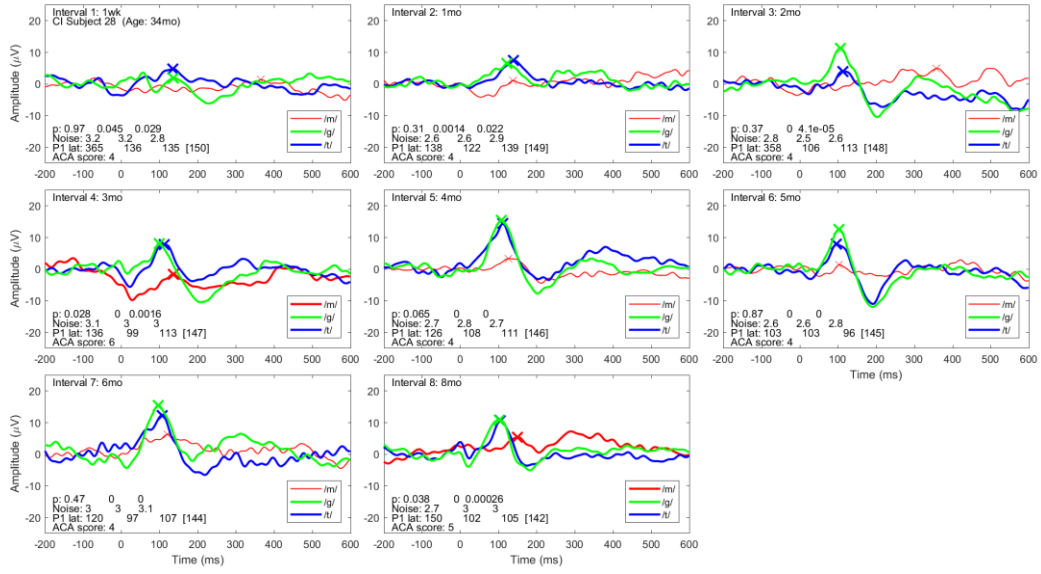


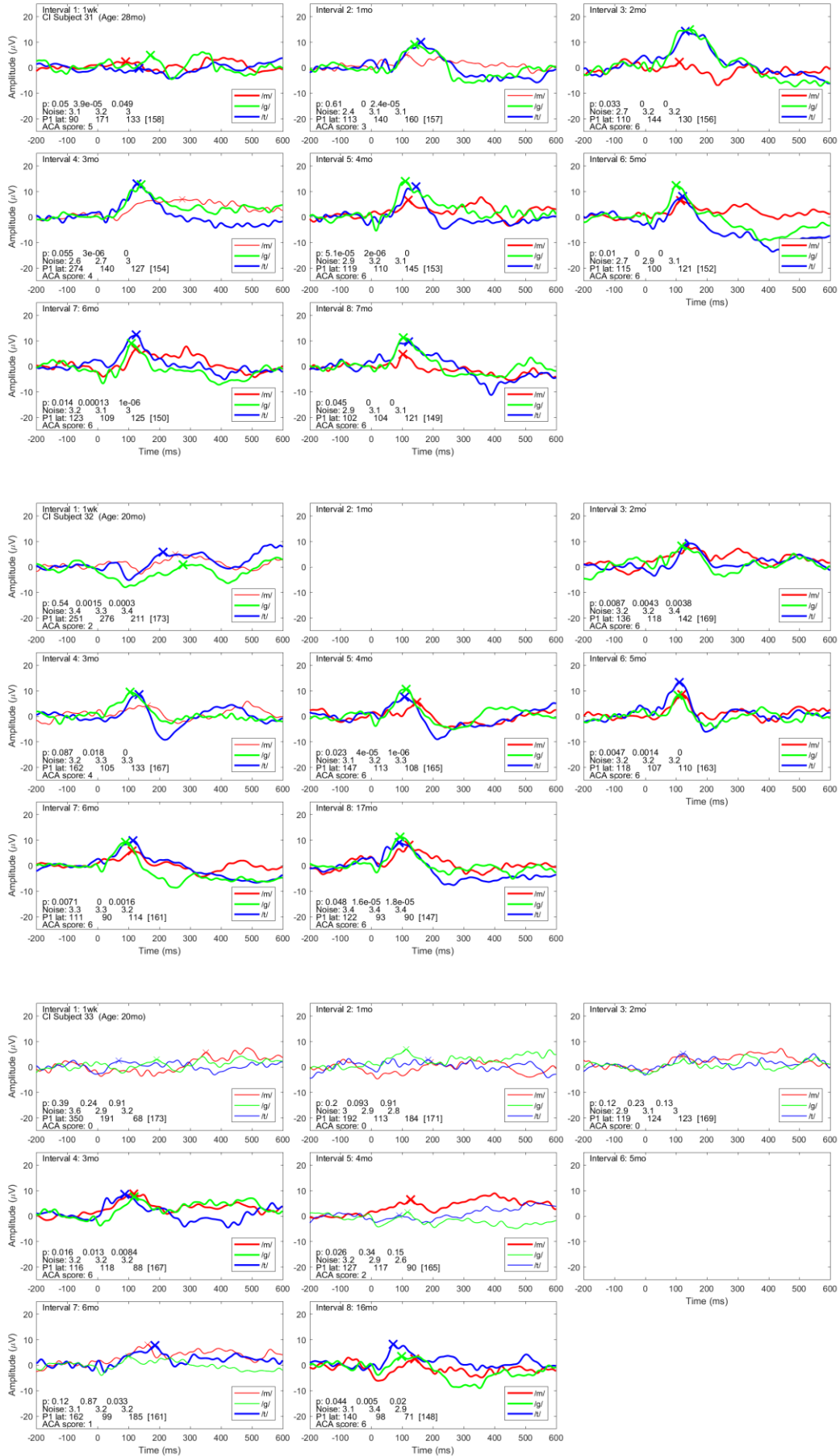




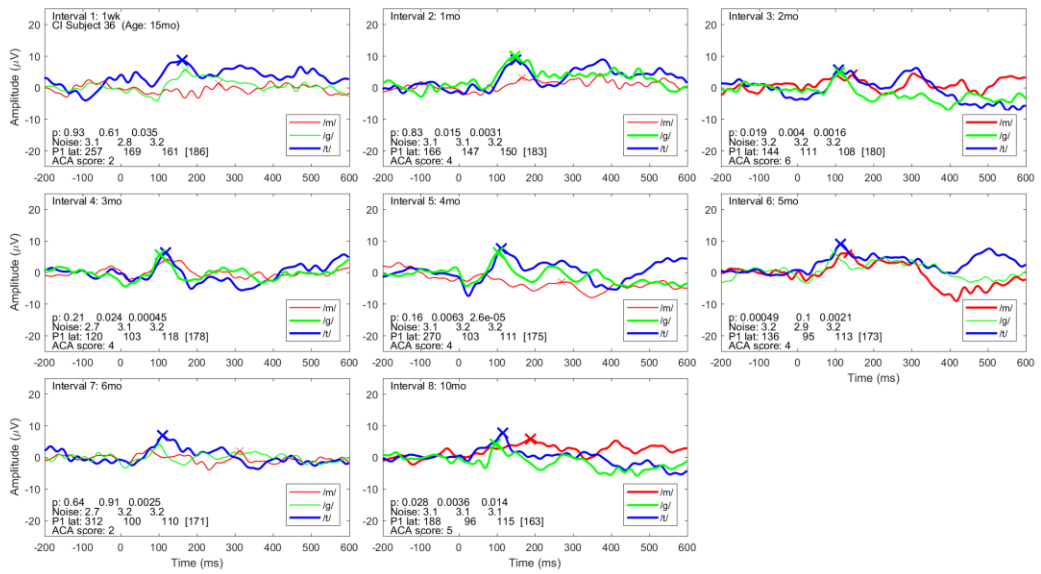
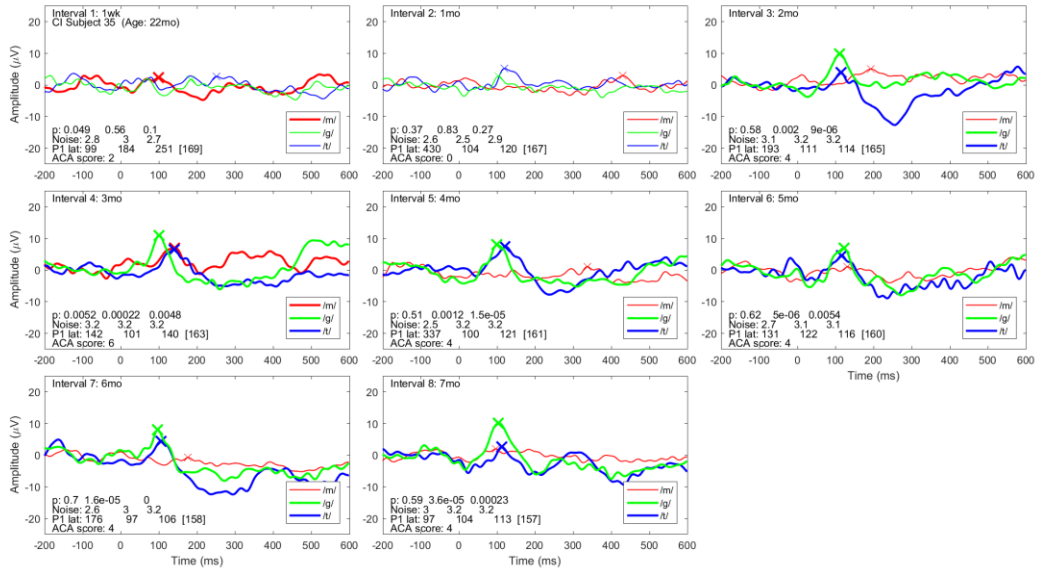
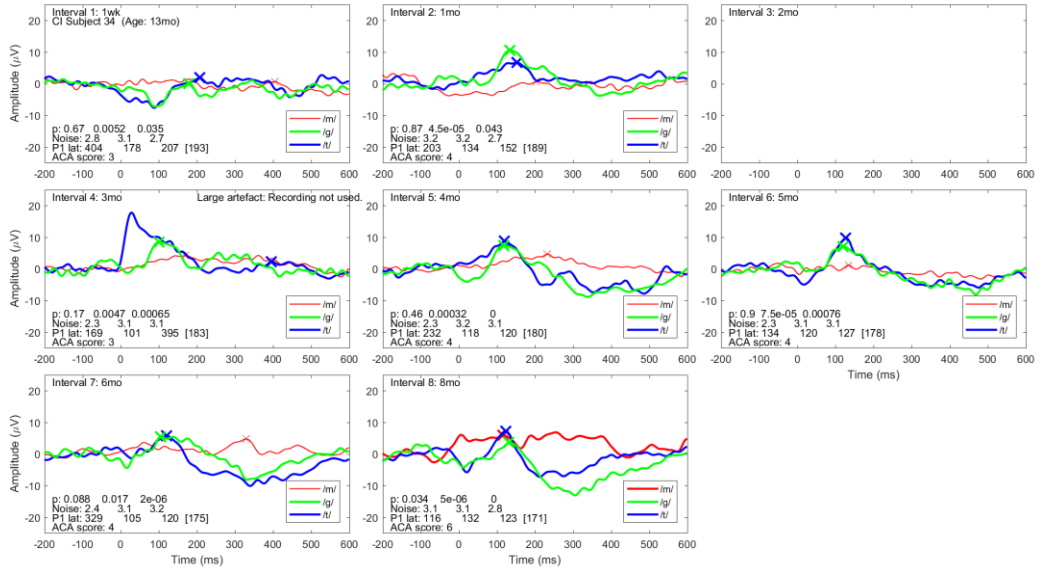


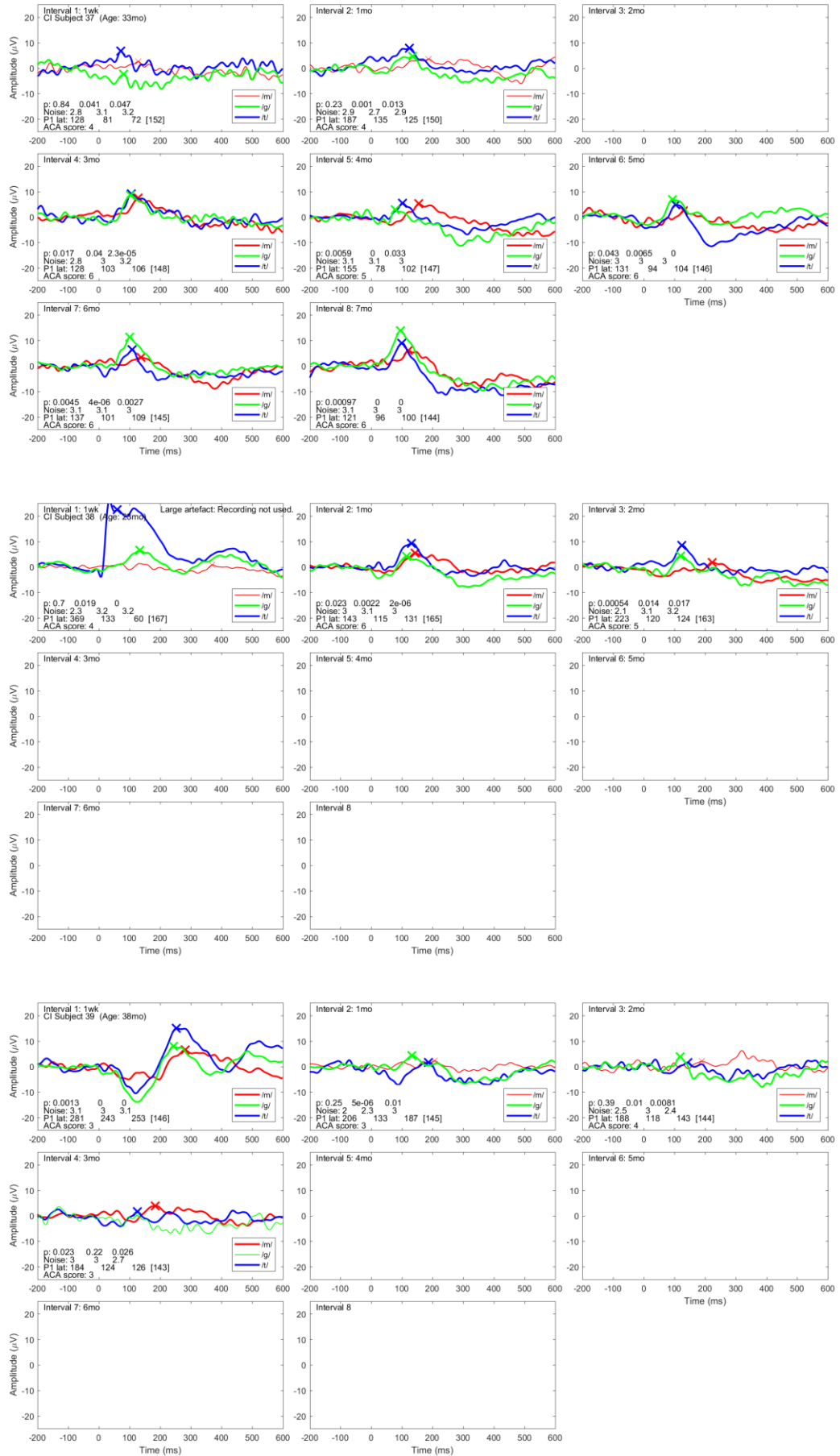


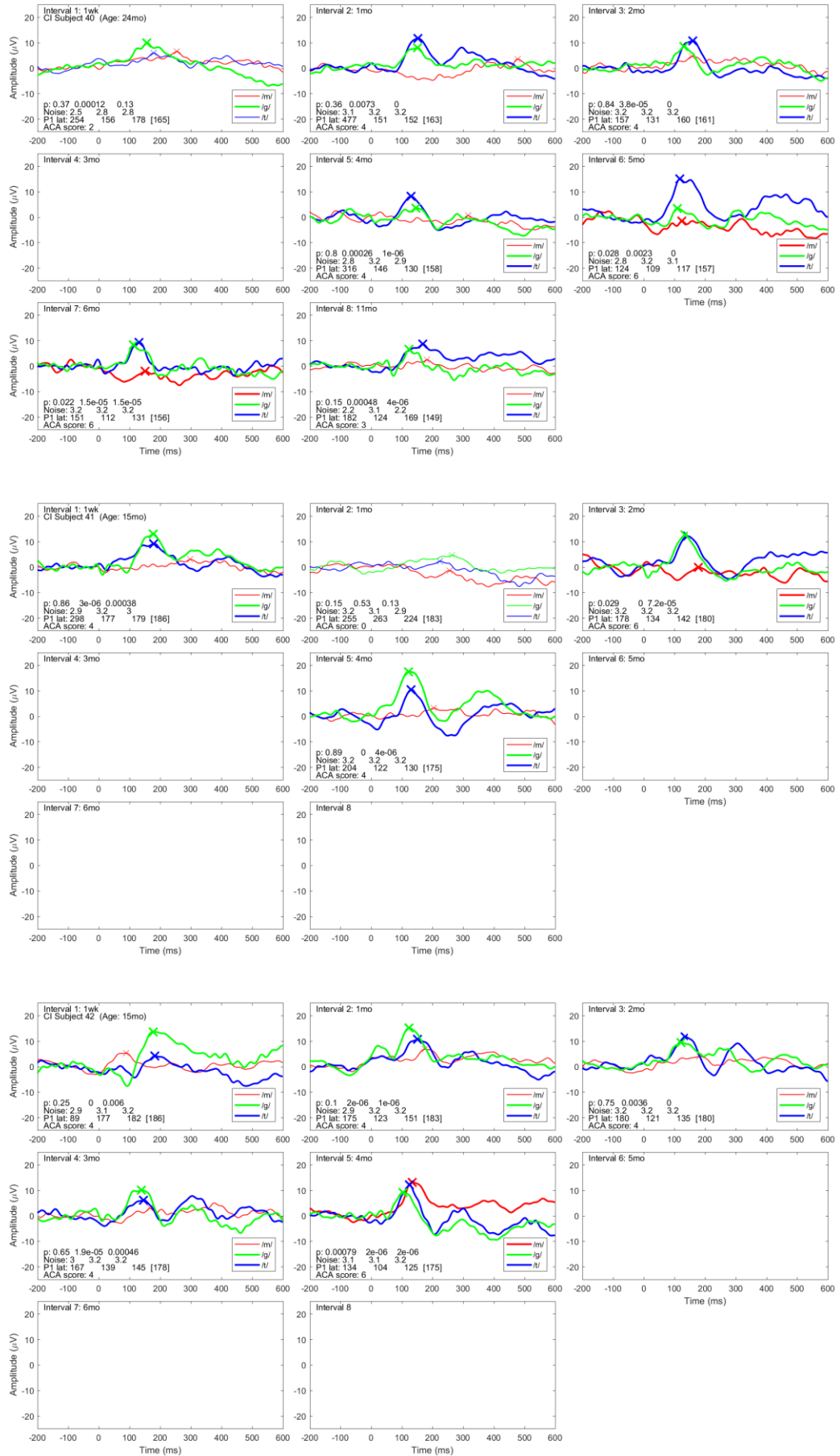




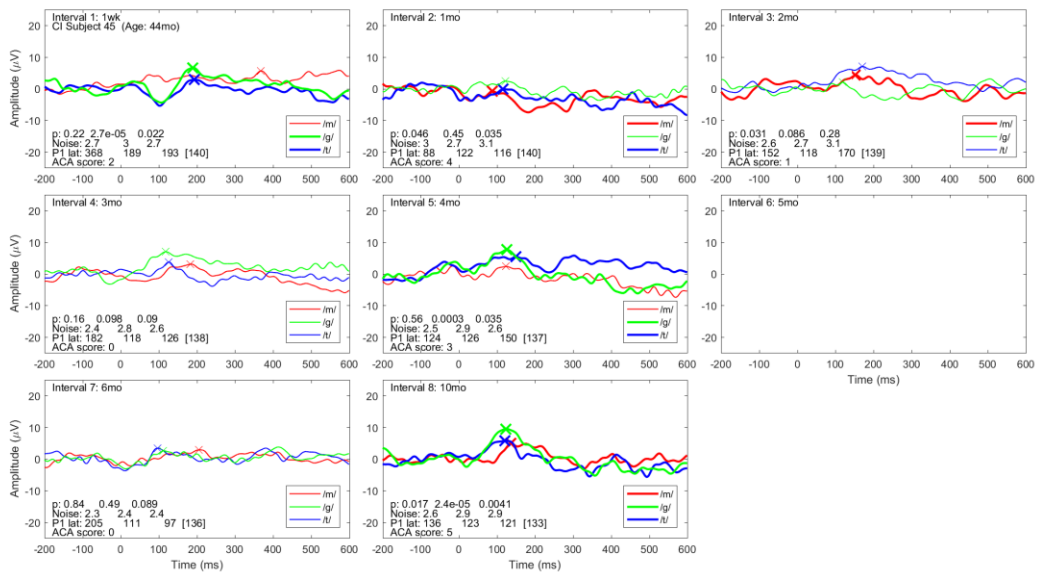
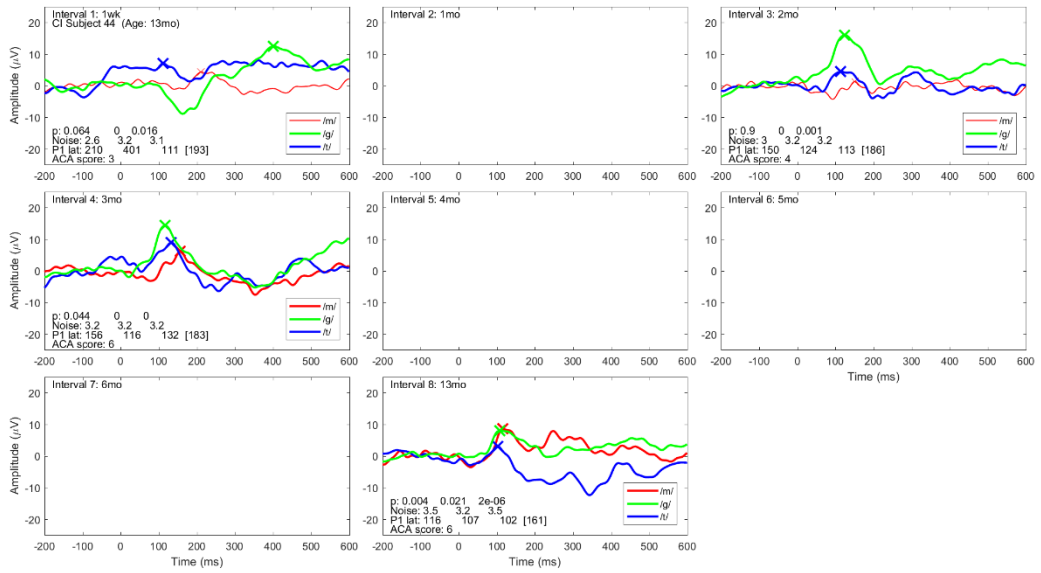
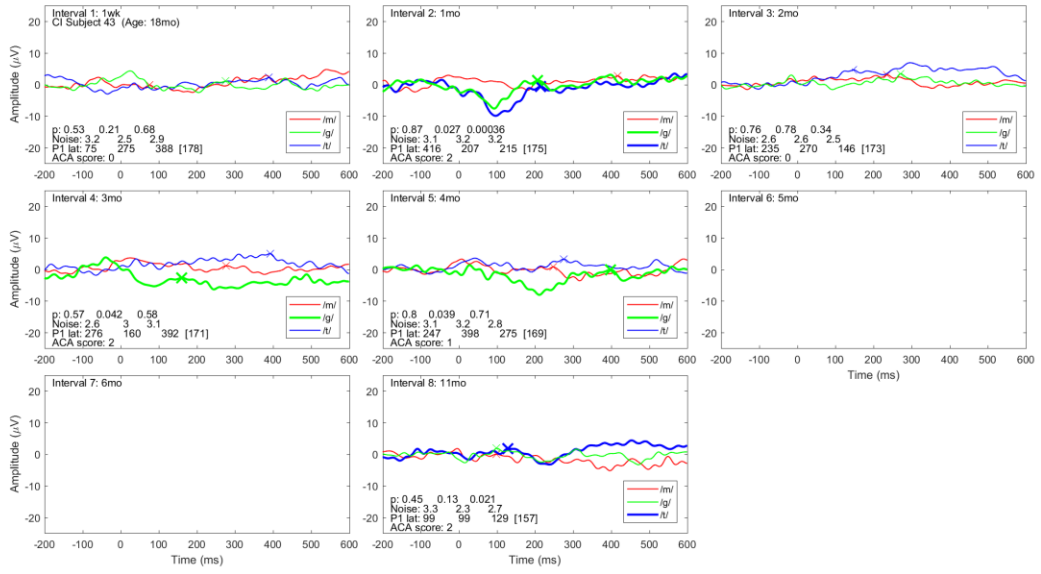












## Additional materials – NH children (subjects 1 to 20)

The following information is provided:

- All waveforms for each subject.
- Same measures as provided for CI children.

